

# GAAD and GALAD algorithmic scores demonstrate equivalent clinical performance for hepatocellular carcinoma (HCC) surveillance in prospective, multicenter, case-control studies

EuroMedLab 2023:  
21-25 May, Rome, Italy

Jinlin Hou,<sup>1</sup> Thomas Berg,<sup>2</sup> Arndt Vogel,<sup>3</sup> Teerha Piratvisuth,<sup>4</sup> Jörg Trojan,<sup>5</sup> Enrico N De Toni,<sup>6</sup> Masatoshi Kudo,<sup>7</sup> Katarina Malinowsky,<sup>8</sup> Peter Findeisen,<sup>9</sup> Johannes Kolja Hegel,<sup>10</sup> Wenzel Schöning,<sup>11</sup> Kairat Madin,<sup>12</sup> Konstantin Kroeniger,<sup>12</sup> Henry Lik-Yuen Chan,<sup>13</sup> Ashish Sharma<sup>14</sup>



Please scan the above QR code or click the following link to download this poster

<https://bit.ly/3JMWxkc>

P2089

<sup>1</sup>Southern Medical University, Guangzhou China; <sup>2</sup>Universitätsklinikum Leipzig, Leipzig, Germany; <sup>3</sup>Medizinische Hochschule Hannover, Hannover, Germany; <sup>4</sup>Prince of Songkla University, Hat Yai, Thailand; <sup>5</sup>Goethe Universität Frankfurt, Frankfurt, Germany; <sup>6</sup>Department of Medicine II, University Hospital, Ludwig Maximilian University of Munich, Munich, Germany; <sup>7</sup>Kindai University, Osaka, Japan; <sup>8</sup>Microcoat Biotechnologie GmbH, Bernried, Germany; <sup>9</sup>MVZ Labor Dr. Limbach & Kollegen, Heidelberg, Germany; <sup>10</sup>Labor Berlin Charité Vivantes Services GmbH, Berlin, Germany; <sup>11</sup>Universitätsmedizin Berlin, Chirurgische Klinik, Campus Charité Mitte and Campus Virchow-Klinikum, Berlin, Germany; <sup>12</sup>Roche Diagnostics GmbH, Penzberg, Germany; <sup>13</sup>The Chinese University of Hong Kong, Hong Kong; <sup>14</sup>Clinical Development & Medical Affairs, Roche Diagnostics International AG, Rotkreuz, Switzerland

## Introduction

- Early detection of HCC is essential to improve patient outcomes, and so current guidelines recommend surveillance programs, including ultrasound scans every six months with or without alpha-fetoprotein (AFP) testing, to screen at-risk patients. However, these programs do not identify early-stage HCC effectively.<sup>1-5</sup>
- Serum biomarkers, such as AFP, protein induced by vitamin K absence-II (PIVKA-II) and *Lens culinaris* agglutinin-reactive fraction of AFP (AFP-L3), have been proposed to improve the detection of HCC, but taken individually they show inadequate sensitivity and accuracy, thus, their inclusion in guidelines has been inconsistent.<sup>1-6</sup>
- Both the GALAD (combining gender [sex] and age plus a three-serum biomarker panel [AFP-L3, AFP and PIVKA-II]) and the novel GAAD (gender [sex] and age plus two biomarkers [AFP and PIVKA-II]), algorithms have demonstrated good clinical performance for the detection of early-stage HCC.<sup>7,8</sup>

## Aim

- To compare the clinical performance of the GALAD and GAAD algorithms for differentiating between early-stage HCC and benign chronic liver disease (CLD).

## Methods

- Two independent prospective studies (STOP-HCC-MCE and STOP-HCC-Panel B) were conducted with recruiting participants in an international, multicenter, case-control design.
- STOP-HCC-MCE:** Patients aged  $\geq 18$  years were enrolled at 10 clinics in China (including the Hong Kong Special Administrative Region), Germany, Thailand, and Japan and included in clinical performance analysis or specificity panel (Figure 1A).
  - Results from the specificity panel will be included in a subsequent publication.
- STOP-HCC-Panel B:** Patients ( $\geq 18$  years) were enrolled at 7 clinics across Germany, Spain, Thailand and Hong Kong (Figure 1B).
- In both studies, eligible HCC cases had first-time HCC diagnosis confirmed by ultrasound or pathology. Eligible CLD controls had imaging-confirmed absence of HCC (within 12 months), and presence of cirrhosis or non-cirrhotic liver disease (viral [hepatitis B or hepatitis C virus] or non-viral [non-alcoholic steatohepatitis, alcohol-related liver disease or other]).
- Serum levels of PIVKA-II, AFP and AFP-L3 were measured using Elecsys<sup>®</sup> assays on the cobas<sup>®</sup> e 601 analyzer, or  $\mu$ TASWAKO<sup>™</sup> assays on the Fujifilm Micro Total Analysis System Wako analyzer.
- The established cut-offs for HCC detection were 2.47 for GALAD (cobas) and 2.57 for GAAD (cobas) (range 0-10 for both algorithms using Elecsys assays), and -0.63 for the Fujifilm GALAD algorithm (using  $\mu$ TASWAKO assays).
- An additional cut-off of -1.89 for the Fujifilm GALAD algorithm (using  $\mu$ TASWAKO assays) was also assessed which corresponds to matching GAAD (cobas) specificity of 90%.
- The clinical performance of the GAAD algorithm was compared with that of the GALAD algorithms. Performance was assessed using receiver operating characteristic (ROC) analysis and area under the curve (AUC) values were calculated.

## Results

### STOP-HCC-MCE

#### Participants

- A total of 1142 patients (366 with HCC with 48% early stage; 303 CLD controls; and 468 specificity panel) were included in the STOP-HCC-MCE study (Table 1).
- One CLD control had incomplete AFP-L3 biomarker data and was excluded from the analysis.

Table 1: Participant demographics and clinical characteristics in STOP-HCC-MCE (clinical performance panel).

	HCC cases (n=366)	CLD controls (n=303)
<b>Age, years</b>		
Mean (SD)	59.8 (11.4)	49.5 (12.5)
<b>Sex, n (%)</b>		
Male	308 (84.2%)	192 (63.4%)
Female	58 (15.8%)	111 (36.6%)
<b>Race, n (%)</b>		
Asian	226 (61.7%)	181 (59.7%)
White	138 (37.7%)	113 (37.3%)
Black or African American	1 (0.3%)	3 (1%)
Other	0 (0%)	1 (0.3%)
Missing	1 (0.3%)	5 (1.7%)
<b>Etiology, n (%)</b>		
Cirrhosis	287 (71.9%)	112 (28.1%)
Cirrhotic viral	222 (74.5%)	76 (25.5%)
Cirrhotic non-viral	126 (69.6%)	55 (30.4%)
Non-cirrhotic	79 (29.3%)	191 (70.7%)
Non-cirrhotic viral	60 (27.3%)	160 (72.7%)
Non-cirrhotic non-viral	21 (16.5%)	106 (83.5%)
<b>HCC stage</b>		
Early (BCLC 0, A)	174 (47.5%)	-
Late (BCLC B, C, D)	192 (52.5%)	-

BCLC, Barcelona Clinic Liver Cancer; CLD, chronic liver disease; HCC, hepatocellular carcinoma; SD, standard deviation.

#### Clinical performance

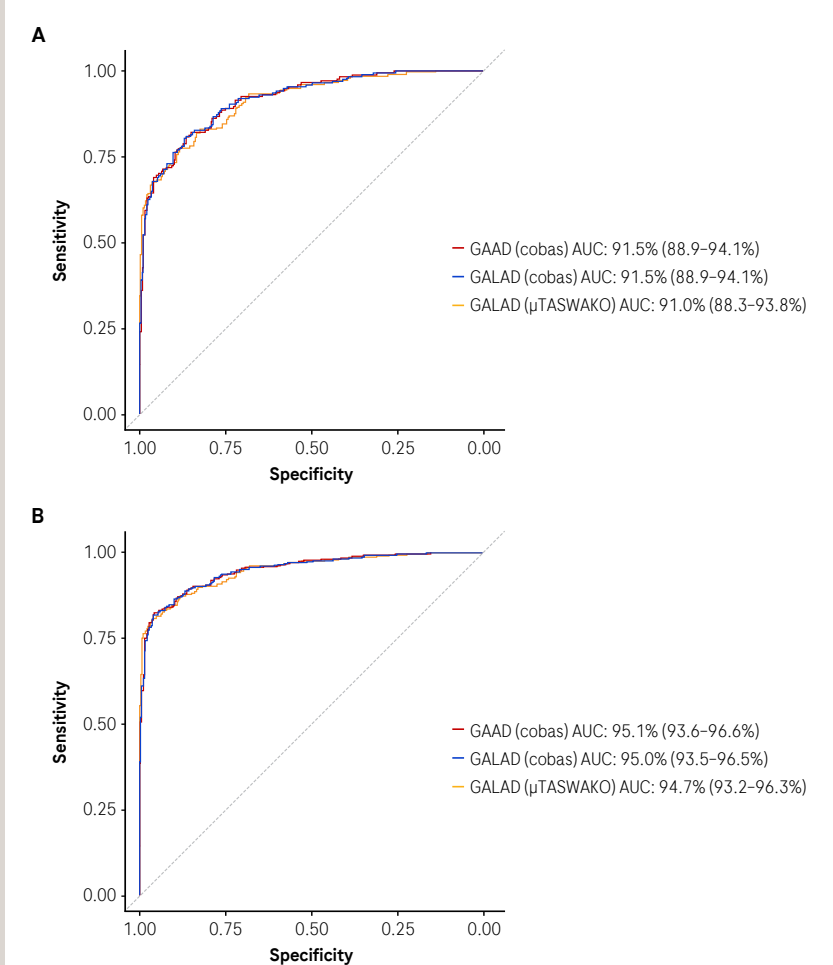
- The GAAD and GALAD (cobas) algorithms, and the GALAD ( $\mu$ TASWAKO) algorithm showed similar performance (AUC) for discriminating between HCC and CLD for both early- and all-stage HCC (Figure 2).
- However, sensitivity was higher with the GAAD and GALAD (cobas) algorithms compared with GALAD ( $\mu$ TASWAKO) for both early and all-stage HCC (Table 2). Specificity for CLD controls was above 90% with all three algorithms
- Using a comparable cut-off for GALAD ( $\mu$ TASWAKO), clinical performance was comparable to GAAD and GALAD (cobas) (Table 2).
- The AUCs of GAAD and GALAD (cobas) algorithms were similar across cirrhotic and non-cirrhotic etiologies (Figure 3).

Table 2: Clinical performance of GAAD and GALAD algorithms for the detection of early-stage and all-stage HCC in STOP-HCC-MCE (clinical performance panel) [all results shown as % (95% CI)].

Algorithm (cut-off score)	Early-stage HCC (N=174)		HCC cases (N=366)		CLD controls (N=302)	
	Sensitivity	Specificity	Sensitivity	Specificity	Sensitivity	Specificity
<b>GAAD</b> (cobas, 2.57)	70.1 (62.7-76.8)	83.1 (78.8-86.8)	94.0 (90.7-96.4)			
<b>GALAD</b> (cobas, 2.47)	70.1 (62.7-76.8)	83.3 (79.1-87.0)	93.0 (89.5-95.6)			
<b>GALAD</b> ( $\mu$ TASWAKO, -0.63)	56.7 (44.0-68.8)	68.3 (59.2-76.5)	100 (95.7-100)			
<b>GALAD</b> ( $\mu$ TASWAKO, -1.89)	72.4 (65.1-78.8)	82.8 (78.5-86.5)	89.1 (85.0-92.4)			

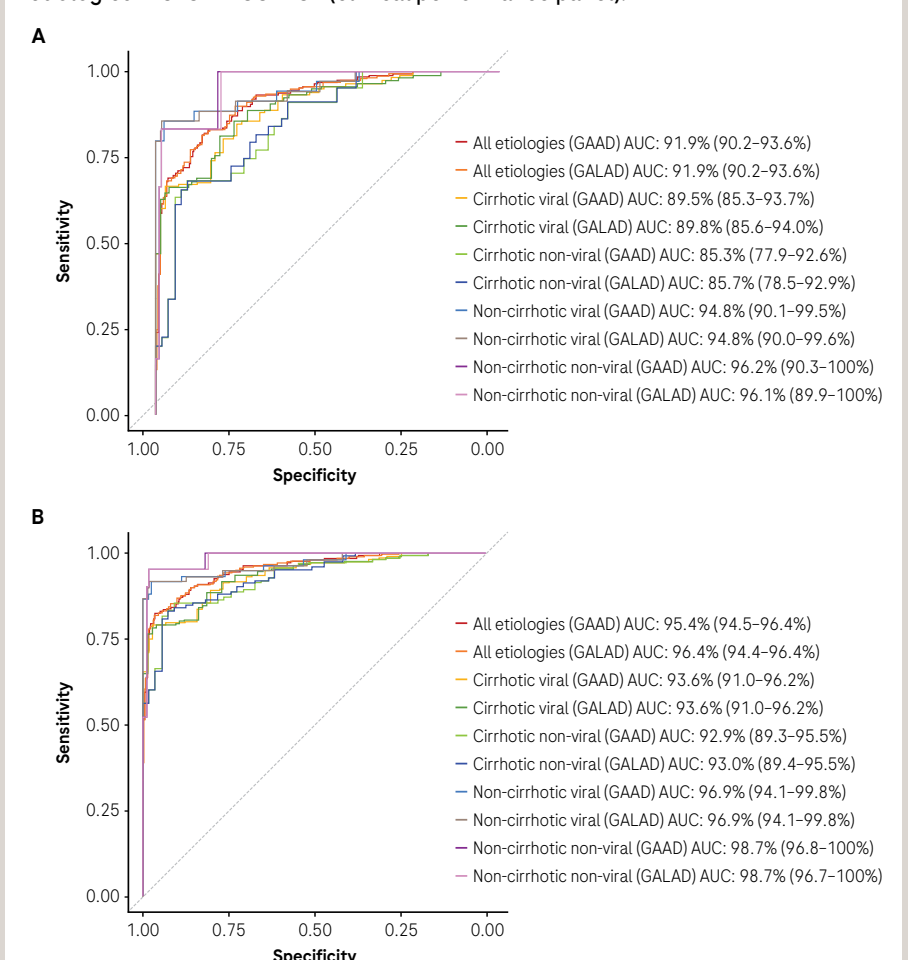
CI, confidence interval; CLD, chronic liver disease; HCC, hepatocellular carcinoma.

Figure 2: ROC plot of the GAAD and GALAD (cobas) algorithms and GALAD ( $\mu$ TASWAKO) algorithm for discriminating between CLD controls and early-stage (A) or all-stage (B) HCC patients in STOP-HCC-MCE (clinical performance panel).



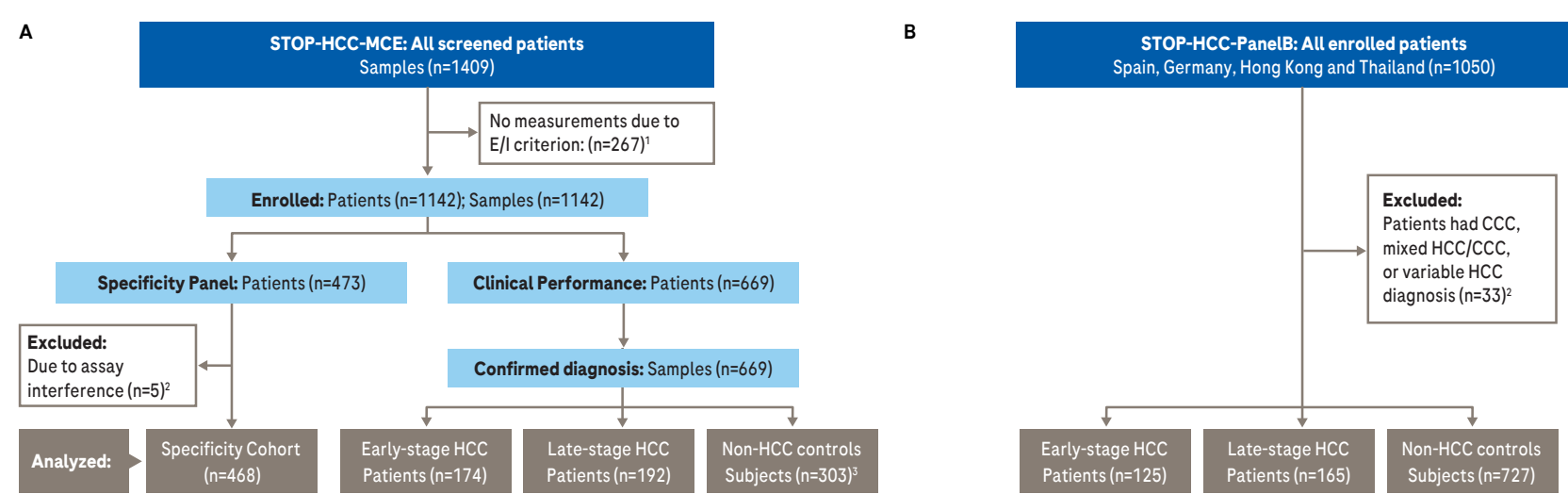
AUC, area under the curve; CLD, chronic liver disease; HCC, hepatocellular carcinoma; ROC, receiver operating characteristic.

Figure 3: ROC plot of GAAD and GALAD (cobas) algorithms for discriminating between CLD controls and early-stage (A) or all-stage (B) HCC patients across etiologies in STOP-HCC-MCE (clinical performance panel).



The ROC curves and AUC values might slightly differ from the overall analysis, as patients are counted several times, when having several etiologies. AUC, area under the curve; CLD, chronic liver disease; HCC, hepatocellular carcinoma; ROC, receiver operating characteristic.

Figure 1: Study Designs of STOP-HCC-MCE (A) and STOP-HCC-Panel B (B).



<sup>1</sup> Excluded because of exclusion criteria e.g. renal failure, informed consent, etc. <sup>2</sup> Excluded because of interferences with assays; <sup>3</sup> One Non-HCC control subject was excluded for GALAD (cobas) analysis due to interference with AFP-L3 assay. Results from the specificity panel in STOP-HCC-MCE will be presented in a subsequent publication. HCC, hepatocellular carcinoma.

## Conclusions

- The GAAD and GALAD (cobas) algorithms, and the GALAD ( $\mu$ TASWAKO) algorithm demonstrated similar performance in differentiating HCC and CLD controls.
- The GAAD and GALAD (cobas) algorithms both demonstrated good clinical performance in differentiating HCC and CLD controls.
  - Performance of GAAD and GALAD (cobas) algorithms was similar across all disease stages and etiologies.
- This suggests that the Elecsys AFP-L3 assay had a negligible impact as part of the GALAD (cobas) algorithm in this cohort.
- The GAAD (cobas) algorithm may represent a useful and time-efficient tool for early HCC detection in HCC surveillance, with the potential to increase curative treatment opportunities and reduce mortality.

## References

- Vogel A, et al. Ann Oncol. 2018;29(Suppl. 4):iv238-iv255; 2. Piratvisuth T, et al. Hepatol Commun. 2022;6(4):679-691; 3. Marrero JA, et al. Hepatology. 2018;2(68):723-750; 4. Omata M, et al. Hepatol Int. 2017;11(4):317-370; 5. EASL. J Hepatol. 2018;69:182-236; 6. Shiina S, et al. Hepatol Int. 2020;14:920-929; 7. Best J, et al. Clin Gastroenterol Hepatol. 2020;18(12):728-735.e4; 8. Chan H-L-Y et al. Presented at EASL ISC 2022, 22-26 June, 2022. International Liver Congress [poster].

## Acknowledgements

This study was funded by Roche Diagnostics GmbH (Penzberg, Germany). Editorial support was provided by Estelle Challinor of inScience Communications, Springer Healthcare (UK) and was funded by Roche Diagnostics Ltd (Rotkreuz, Switzerland). GAAD is a CE-marked digital tool for aid in diagnosis of early stage HCC. ELECSYS and COBAS are trademarks of Roche. All other product names and trademarks are the property of their respective owners.

## Disclosures

JH reports speaker's bureau participation for Glaxo-Smith-Kline, Gilead Sciences, Roche Diagnostics, grant/research support from Gilead Sciences, BMS, advisory committee or review panel for Allogis, Assembly, Glaxo-Smith-Kline, Gilead Sciences, Johnson Pharmaceutica, Roche, TB reports consultancy fees from Bayer, Eisai, Ipsen, Merck Sharp & Dome/Merck, and Roche. AV reports consultancy fees from AstraZeneca, Amgen, BeiGene, Böhlinger Mannheim, BMS, BTG, Daiichi-Sankyo, Eisai, Incyte, Ipsen, MSD, PierreFabre, Roche, Servier, Sirtex, Takeda, Terumo. Research funding from Servier, Incyte, Commercial medical education provider for Onclive, Oncowissen.de. TP reports speaker's bureau participation for Bristol-Myers Squibb, Gilead Sciences, Bayer, Abbott and Eisai and MSD and research grant/contracts from Gilead Science, Roche Diagnostics, Janssen Fibrogen and VIR. JT reports consultancy fees from Amgen, Bayer Healthcare, Bristol Myers Squibb, Eisai, Ipsen, Merck Serono, Merck Sharp & Dome, Lilly ImClone and Roche. ENDeT reports consultancy fees from AstraZeneca, Bayer, BMS, Eisai, Eli Lilly & Co, Pfizer, IPSEN and Roche. grant/research support from AstraZeneca, Bayer, BMS, Eisai, Eli Lilly & Co, EA Pharma, grant/research support from Gilead Sciences, Takeda, Otsuka, EA Pharma, AbbVie, Eisai, Ono and advisory committee or review panel for Eisai, Ono, MSD, Bristol Myers Squibb and Roche. KM, KK, KM and AS are employees of Roche Diagnostics International AG. PF, JKH and WS have no conflicts to declare. HVC reports consultancy fees from Arbutus Biopharma, Gilead Sciences, Glaxo-Smith-Kline, Janssen Pharmaceutica, Roche, Vir Biotechnology, Allogis Therapeutics, Vaccitech and Virion Therapeutics and speaker's bureau participation for Gilead Sciences, Roche, and Viratris.